

## CHTC – Boiler feed pump

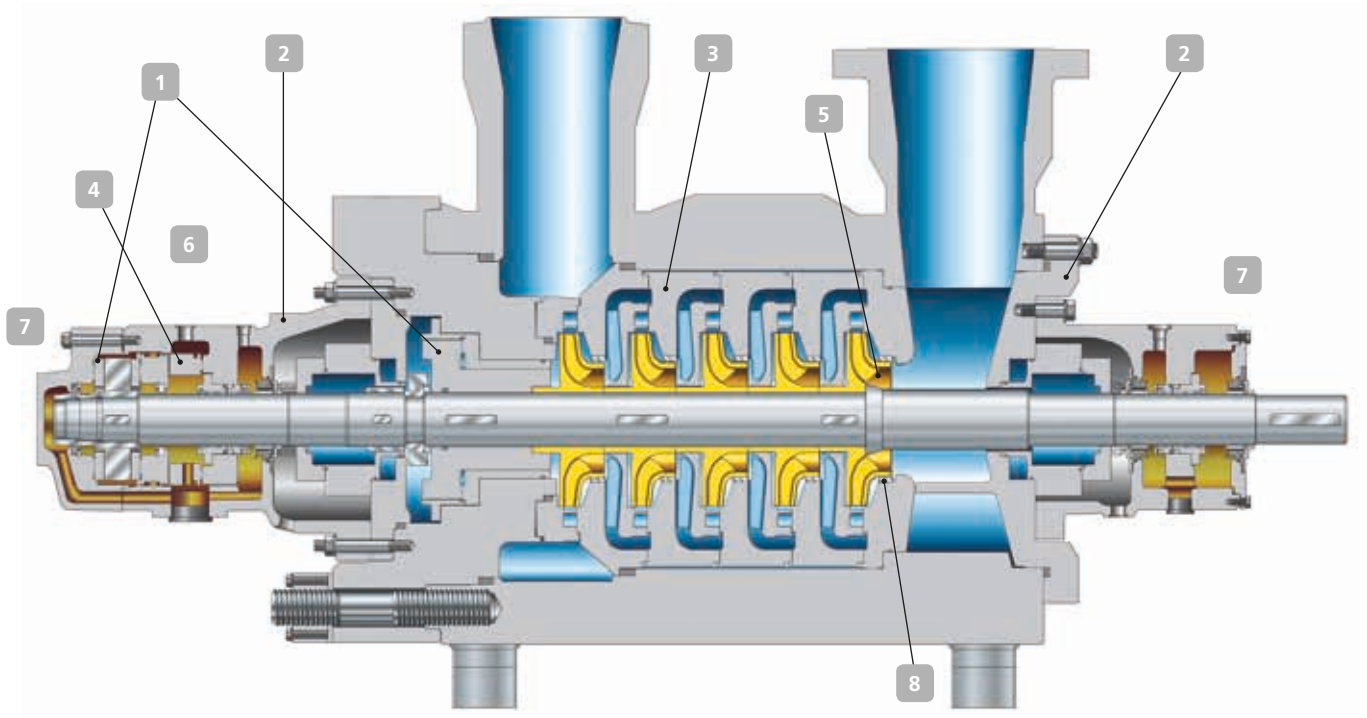


### Applications:

- Handling of boiler feed water and condensate in power stations and industrial facilities
- Generation of pressurised water for descaling equipment

More information: [www.ksb.com/products](http://www.ksb.com/products)

# CHTC – Boiler feed pump



## High operating reliability

- 1 In the case of axial thrust balancing by double drum, the residual axial thrust is absorbed by a tilting-pad thrust bearing
- 2 Optimisation of casing design in terms of line of action of force
- 3 Adaptation of pump casing to rotor deflection line

## Long service life

- 4 Transmission of axial forces to the bearing housing by means of a cardanic ring avoids wear on the thrust bearing
- 5 Low NPSH value thanks to fitting of suction stage impeller as a standard

## Materials

Barrel	Carbon steel
Stage casing	Chromium steel
Impeller / diffuser	Chromium steel
Shaft	Quenched and tempered steel

## Ease of service

- 6 Replacement of pump cartridge without having to remove the pump from the piping
- 7 Maintenance work on wear parts with no opening of the pump

## Reduced operating costs

- 8 Efficiency improvement through cellular surface wear rings

## Technical data\*

Capacity	up to 1,280 m <sup>3</sup> /h
Head	up to 4,200 m
Operating pressure	up to 420 bar
Temperature	up to 200 °C
Speed	up to 6,750 min <sup>-1</sup>
Frequency	50/60 Hz

\*Higher ratings on request



**KSB Aktiengesellschaft**  
 Johann-Klein-Straße 9  
 67227 Frankenthal (Germany)  
 www.ksb.com